

Legend

Project Area (4.78 Acres) Galveston District Boundary

Note

All coordinates shown are referenced to geographic coordinate system (NAD83).

Reference

Base map comprised of ESRI StreetMap USA data.

Vicinity Map

Joint Permit Application
Johnson Bayou, Cameron Parish, Louisiana

ConocoPhillips Company
Project Gumbo North

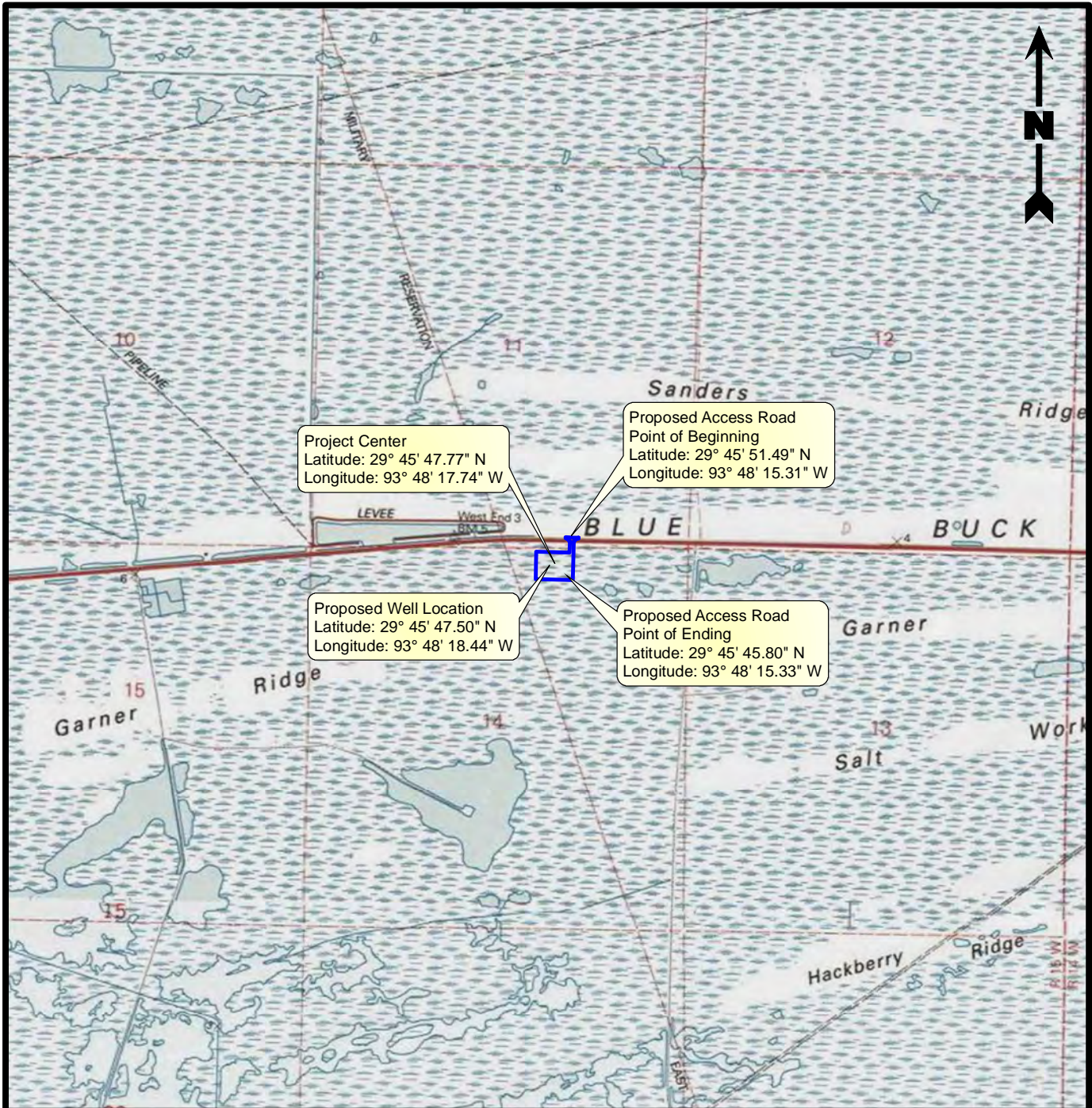


PROVIDENCE

Drawn By	LMM	09/25/23
Checked By	LMH	09/25/23
Approved By	TCK	09/25/23

Project Number
1429-007
Drawing Number
1429-007-A068

1
Figure



2,000 1,000 0 2,000
Feet

Legend

Project Area (4.78 Acres)

Note

All coordinates shown are referenced to geographic coordinate system (NAD83).

Reference

Base map comprised of U.S.G.S. 7.5-minute topographic maps, "West of Johnsons Bayou, LA" and "Texas Point, TX".

Site Location Map

Joint Permit Application
Johnson Bayou, Cameron Parish, Louisiana

ConocoPhillips Company

Project Gumbo North



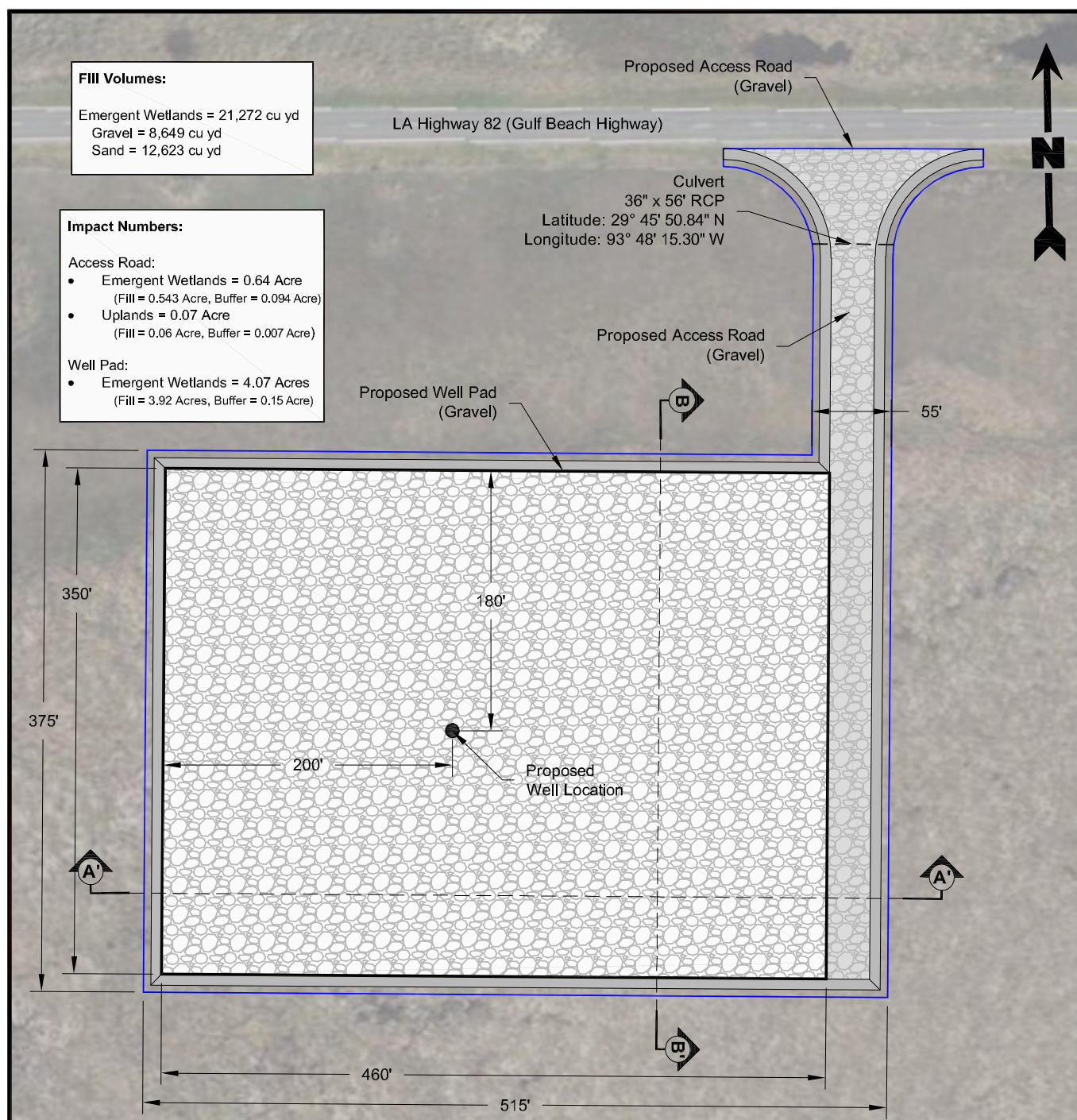
PROVIDENCE

Drawn By	LMM	09/25/23
Checked By	LMH	09/25/23
Approved By	TCK	09/25/23

Project Number
1429-007

Drawing Number
1429-007-A069

2
Figure



Legend

- Proposed Project Area / Limits of Clearing (4.78 Acres)
- Proposed Well Pad
- Proposed Access Road
- Side Slope

Note

All coordinates shown are referenced to geographic coordinate system (NAD83).

Reference

Base map comprised of Bing Maps aerial imagery from (c) 2023 Microsoft Corporation and its data suppliers, exported 09/25/23.

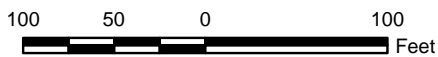
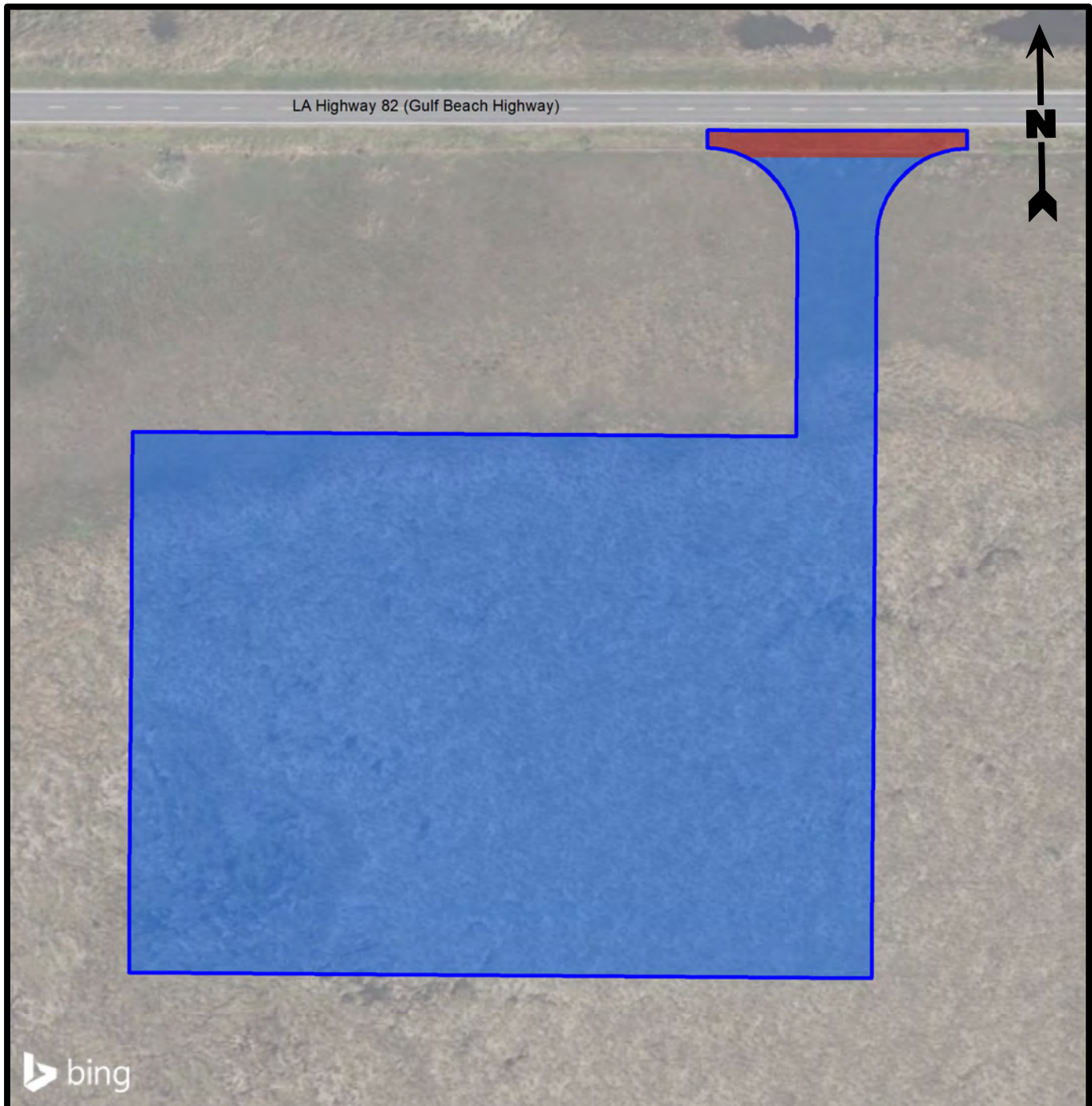
Site Plan

Joint Permit Application
Johnson Bayou, Cameron Parish, Louisiana

ConocoPhillips Company
Project Gumbo North



Drawn By	LMM	09/25/23
Checked By	LMH	09/25/23
Approved By	TCK	09/25/23
Project Number	1429-007	3 Figure
Drawing Number	1429-007-A070	



Legend

- Project Area (4.78 Acres)
- Emergent Wetlands (4.71 Acres)
- Uplands (0.07 Acre)

Reference

Base map comprised of Bing Maps aerial imagery from (c) 2023 Microsoft Corporation and its data suppliers, exported 06/06/23.

Site Plan (Habitat Classifications)

Joint Permit Application
Johnson Bayou, Cameron Parish, Louisiana

ConocoPhillips Company
Project Gumbo North



PROVIDENCE

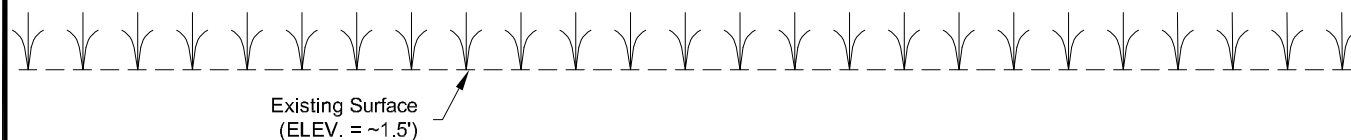
Drawn By	LMM	09/25/23
Checked By	LMH	09/25/23
Approved By	TCK	09/25/23

Project Number
1429-007

Drawing Number
1429-007-A071

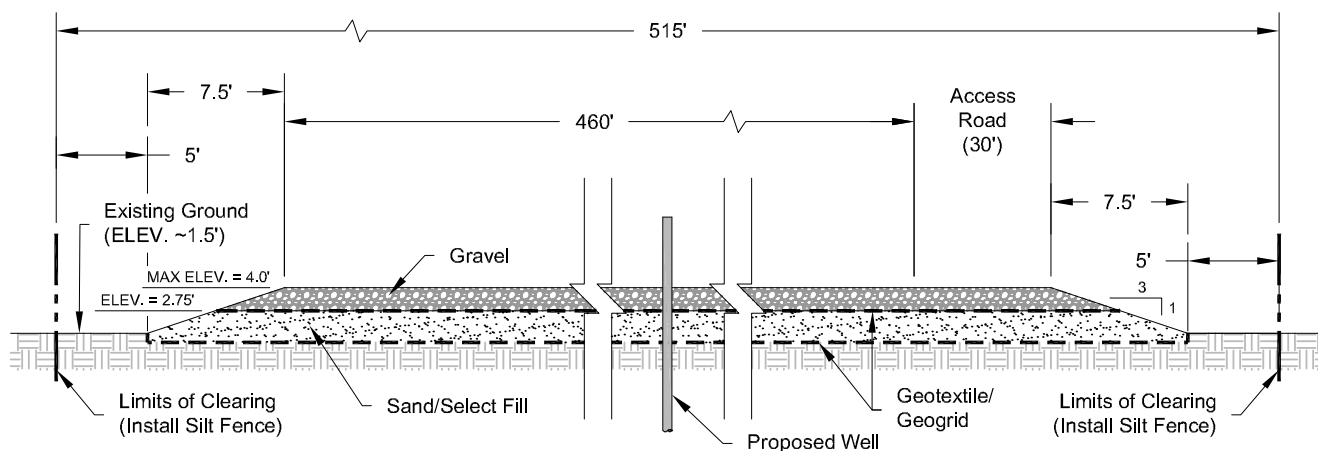
4

Figure



Pre-Construction

Not to Scale



Post-Construction

Not to Scale

Notes

- Elevations (ELEV.) are referenced to North American Vertical Datum 1988 (NAVD88).
- Water levels vary from no visible standing water to shallow inundation based on recent precipitation. No detailed water level history available.
- Existing vegetation will be removed prior to fill installation and placed in an offsite upland location.

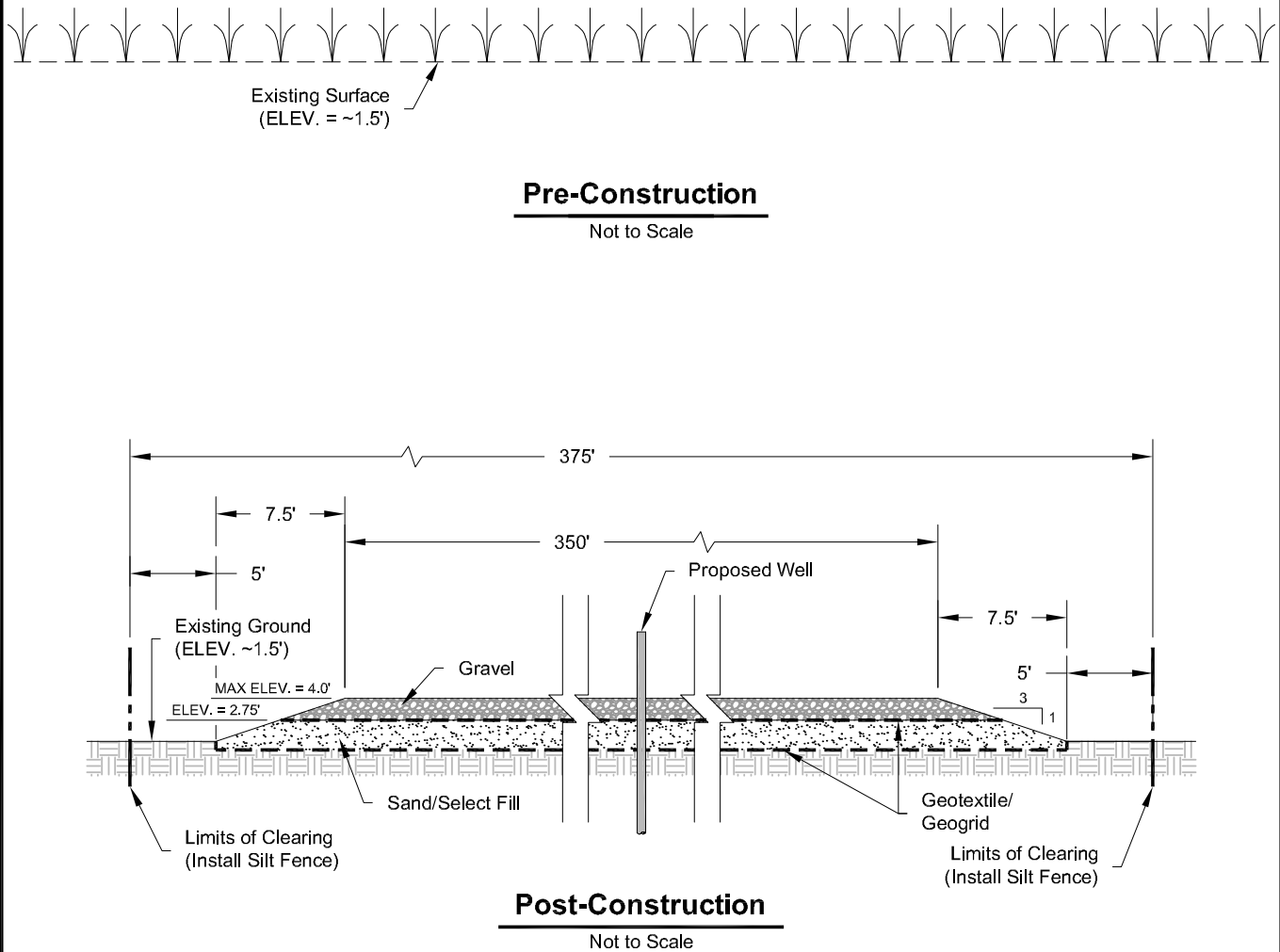
Cross Section A-A'

Joint Permit Application
Johnson Bayou, Cameron Parish, Louisiana

ConocoPhillips Company
Project Gumbo North



Drawn By	LMM	09/25/23
Checked By	LMH	09/25/23
Approved By	TCK	09/25/23
Project Number 1429-007		5a Figure
Drawing Number 1429-007-A072		



Notes

- Elevations (ELEV.) are referenced to North American Vertical Datum 1988 (NAVD88).
- Water levels vary from no visible standing water to shallow inundation based on recent precipitation. No detailed water level history available.
- Existing vegetation will be removed prior to fill installation and placed in an offsite upland location.

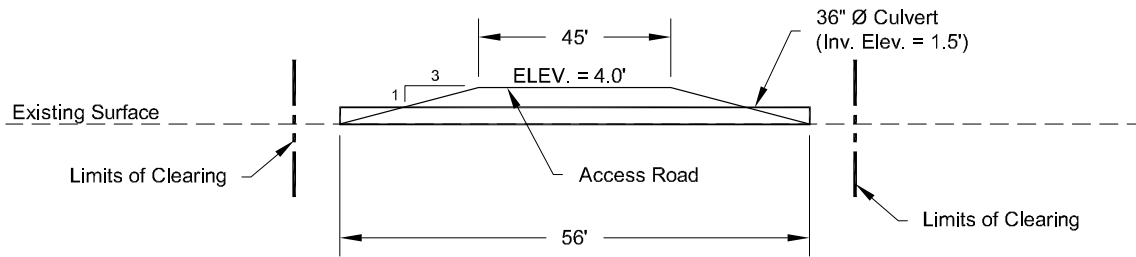
Cross Section B-B'

Joint Permit Application
Johnson Bayou, Cameron Parish, Louisiana

ConocoPhillips Company
Project Gumbo North



Drawn By	LMM	09/25/23
Checked By	LMH	09/25/23
Approved By	TCK	09/25/23
Project Number 1429-007		5b Figure
Drawing Number 1429-007-A078		



Culvert Typical Section

Not to Scale

Notes

1. Elevations (ELEV.) are referenced to North American Vertical Datum 1988 (NAVD88).
2. Water levels vary from no visible standing water to shallow inundation based on recent precipitation. No detailed water level history available.

Culvert Typical Sections

Joint Permit Application
Johnson Bayou, Cameron Parish, Louisiana

ConocoPhillips Company
Project Gumbo North



Drawn By	LMM	09/25/23
Checked By	LMH	09/25/23
Approved By	TCK	09/25/23
Project Number 1429-007		6 Figure
Drawing Number 1429-007-A073		